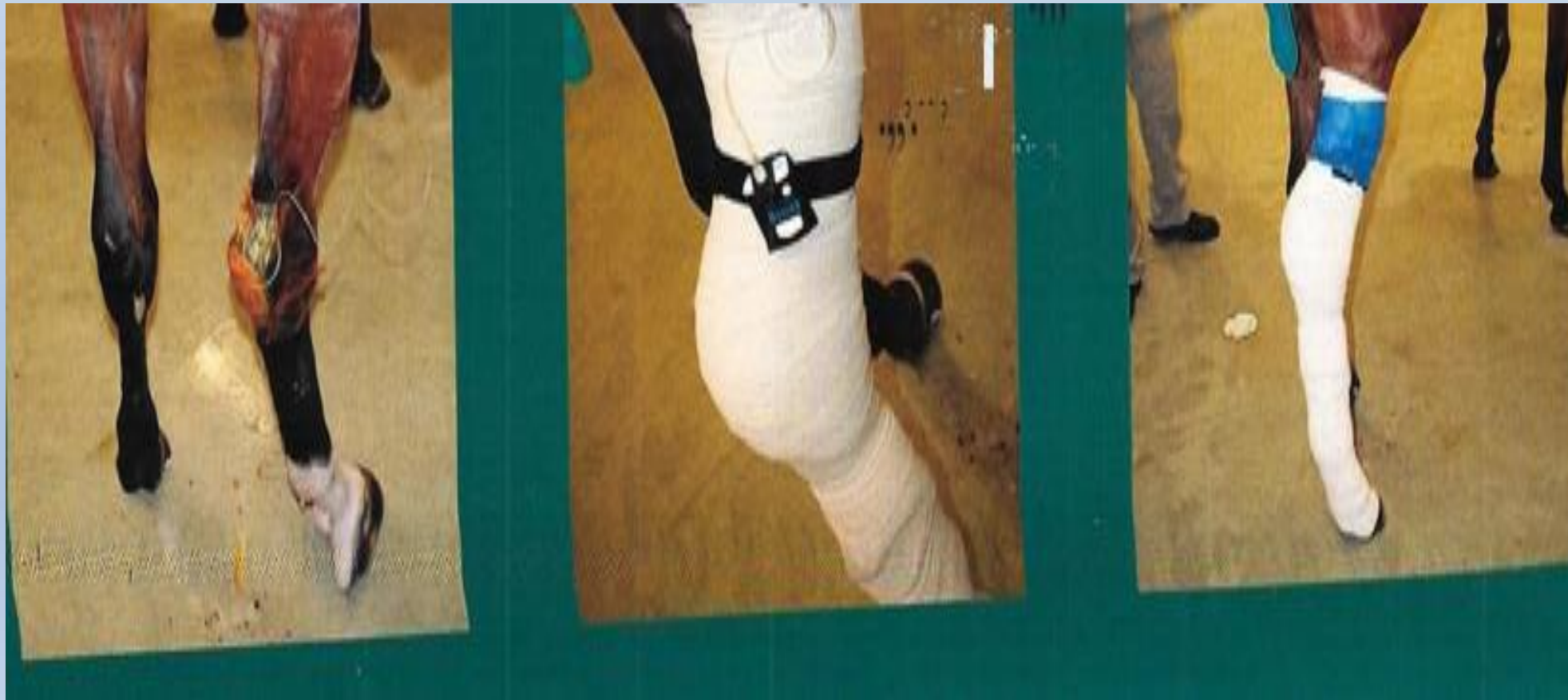


EPIFLO DELIVERS 98+% Oxygen 24/7 to regenerate tissue and promote wound healing in large and small animals

THE ADVANTAGES OF USING EPIFLO

- **Simple to use--works with most dressings**
- **compatible with other therapies**
- **small 4 oz size allows animal to resume normal activities**
- **takes most wounds to full closure**
- **Use of EPIFLO WILL REDUCE TREATMENT TIME AND ASSOCIATED COSTS**



Case 1: Hock Injury: Continual motion, skin tension, chronic infection and exuberant granulation tissue formation are a few of the common consequences that can delay or inhibit adequate wound closure.

A dramatic change in the wound characteristics was evident after the first week of TCOT (Transdermal Continuous Oxygen Therapy) appeared to accelerate wound closure that was otherwise slow to static.

7 Days of EPIFLO®Treatment



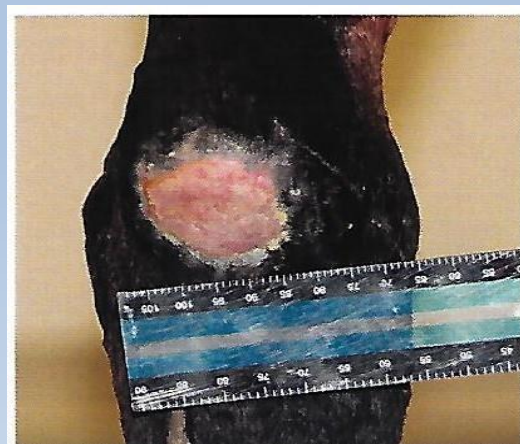
14 Days of EPIFLO®Treatment



21 Days of EPIFLO®Treatment



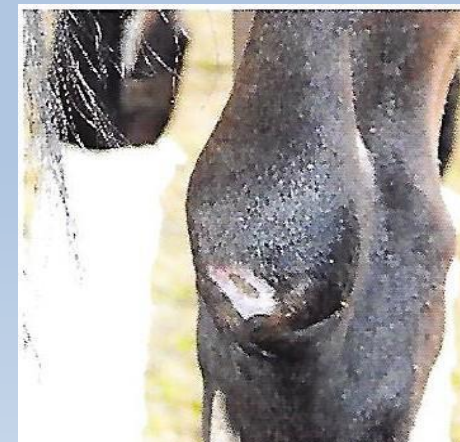
28 Days of EPIFLO®Treatment



35 Days of EPIFLO®Treatment



3 Months Post Discharge



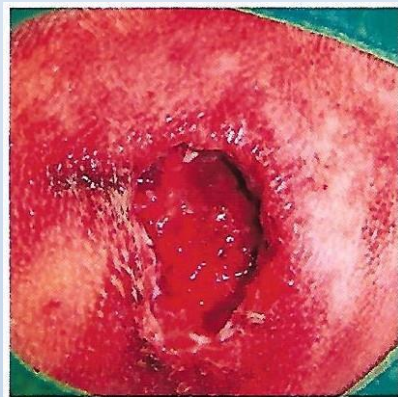
Case study photographs
courtesy of Lloyd
Veterinary Medical
Center at Iowa State
University

Case 2: Commentary

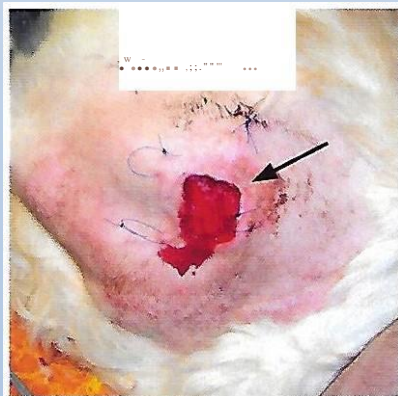
Henry was injured by what is believed to be a brown recluse spider bite to the shoulder. Treatment was effective with debridement, excision of the wound and the application of EPIFLO®. The inflammation in and around the wound has resolved indicating the infection has been greatly reduced or eliminated by EPIFLO® therapy. Oxygen can reduce infections enabling wounds to heal faster. Once the veterinarians saw the normalization of the wound, it was decided to suture it closed. This certainly was a rapid way to treat such a potential difficult wound.



Day 0- Henry, 4 year, MN Golden Lab mix. Suspected spider bite on right shoulder. Necrotic skin and eschar debrided.



Note significant erythema and induration of periwound. Two views of the application procedure of the EPIFLO® device.



Day 3 - Appearance of wound after 3 days on EPIFLO®, immediately following removal of the bandage.

Tubing is still tunneled under the skin to exit within the open wound bed (arrow). Note the resolution of all peri-wound erythema and induration, and granulation tissue within the wound bed. The wound was then sutured and subsequently healed uneventfully.

EPIFLO and ANIMAL HEALTH

24 hr oxygen therapy from a 4 ounce disposable device FDA, CE Mark, cost effective,

EPIFLO: cutting-edge wound technology for all!



A custom made fabric carrying case with an adjustable velcro strap offers the ability to position the EPIFLO® device nearest the wound - wherever it is the most comfortable and unobtrusive, allowing normal daily activity to continue without inconvenience while the wound is healing.

